

THAT A COMPASS OF EYES



THERE ARE NO LAWS ABOUT TIME



THESE
WEAK WEEKS OR

TICK MAY CHARADES

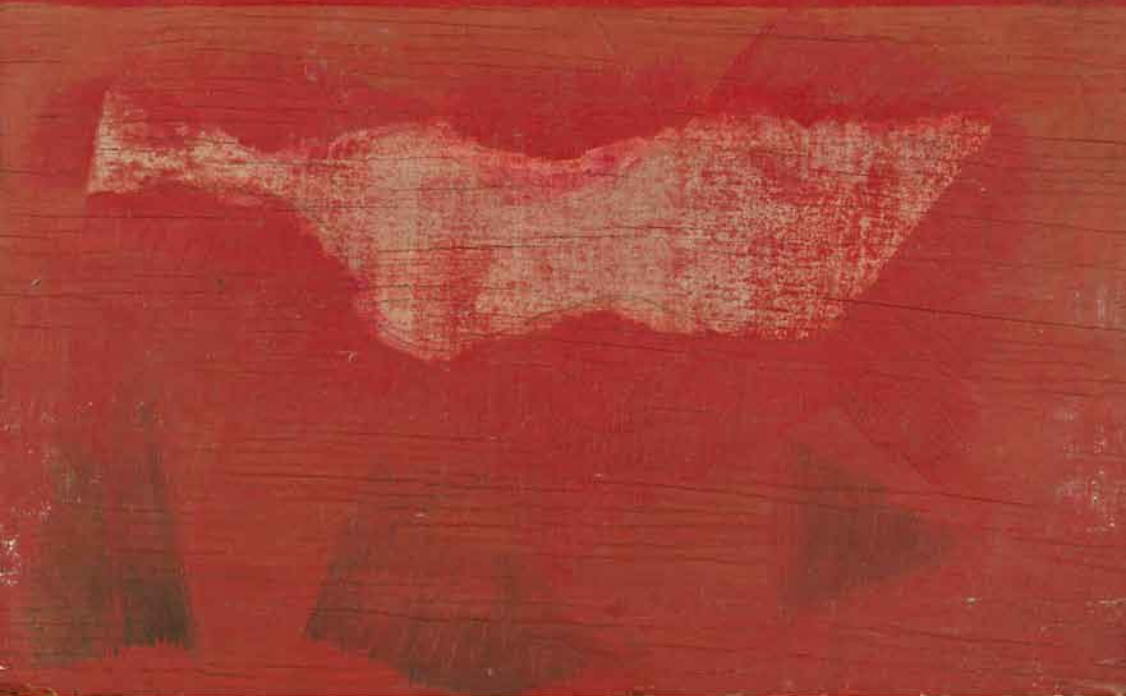
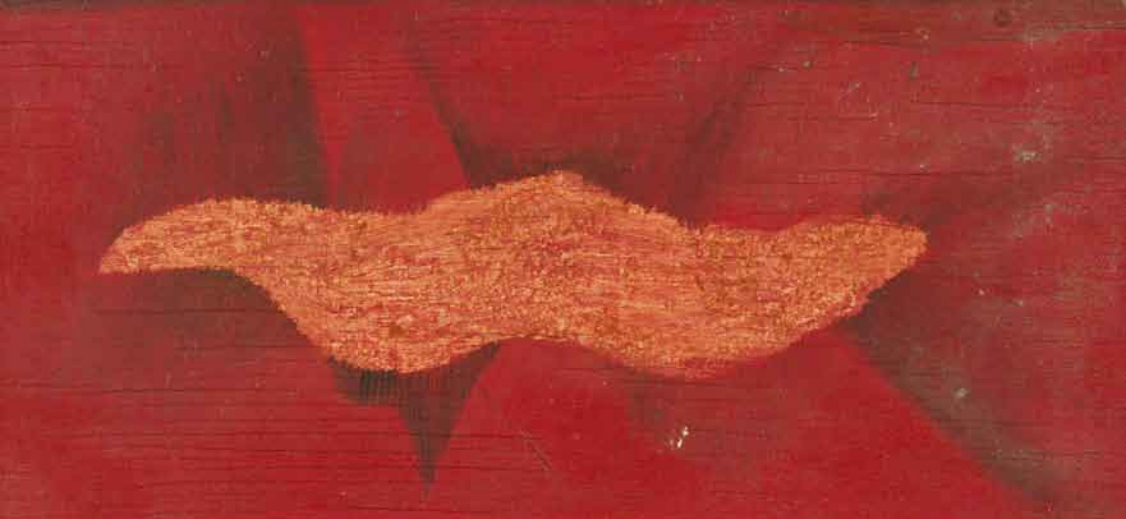
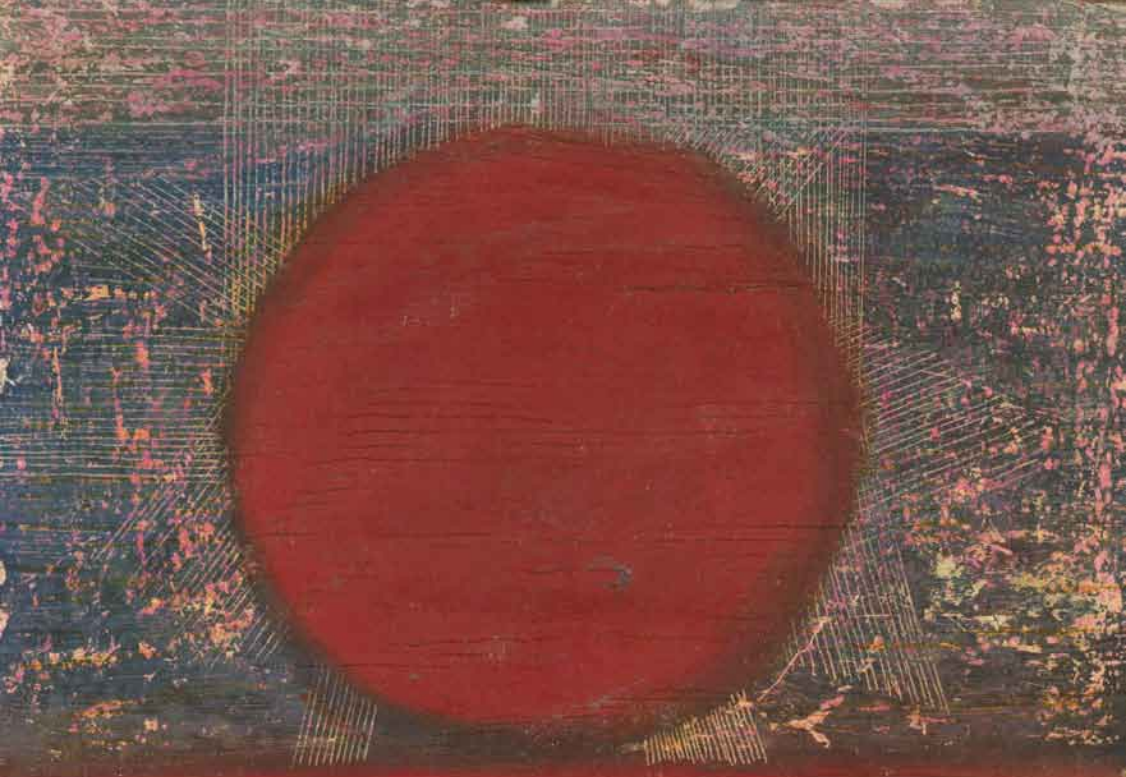
R IN A FATAL GAME



-ABLE ? + SLEEP IS A
TRADESMAN

A PRICE PER SHADOW
THE LIVING LIE WITH
THE DYING LAY WITH
THE LONG LIVE WITH ALL







AS A CENTER



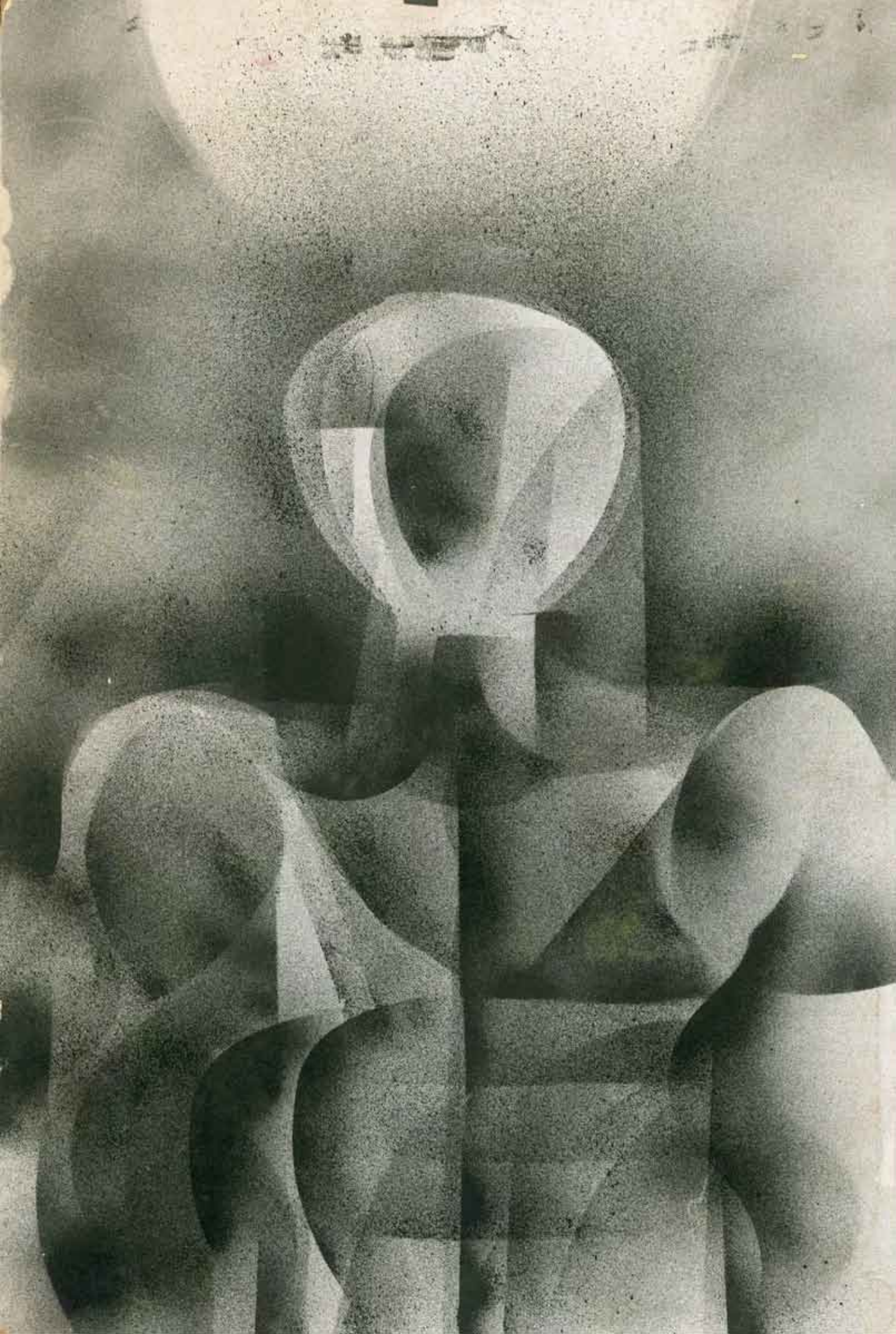










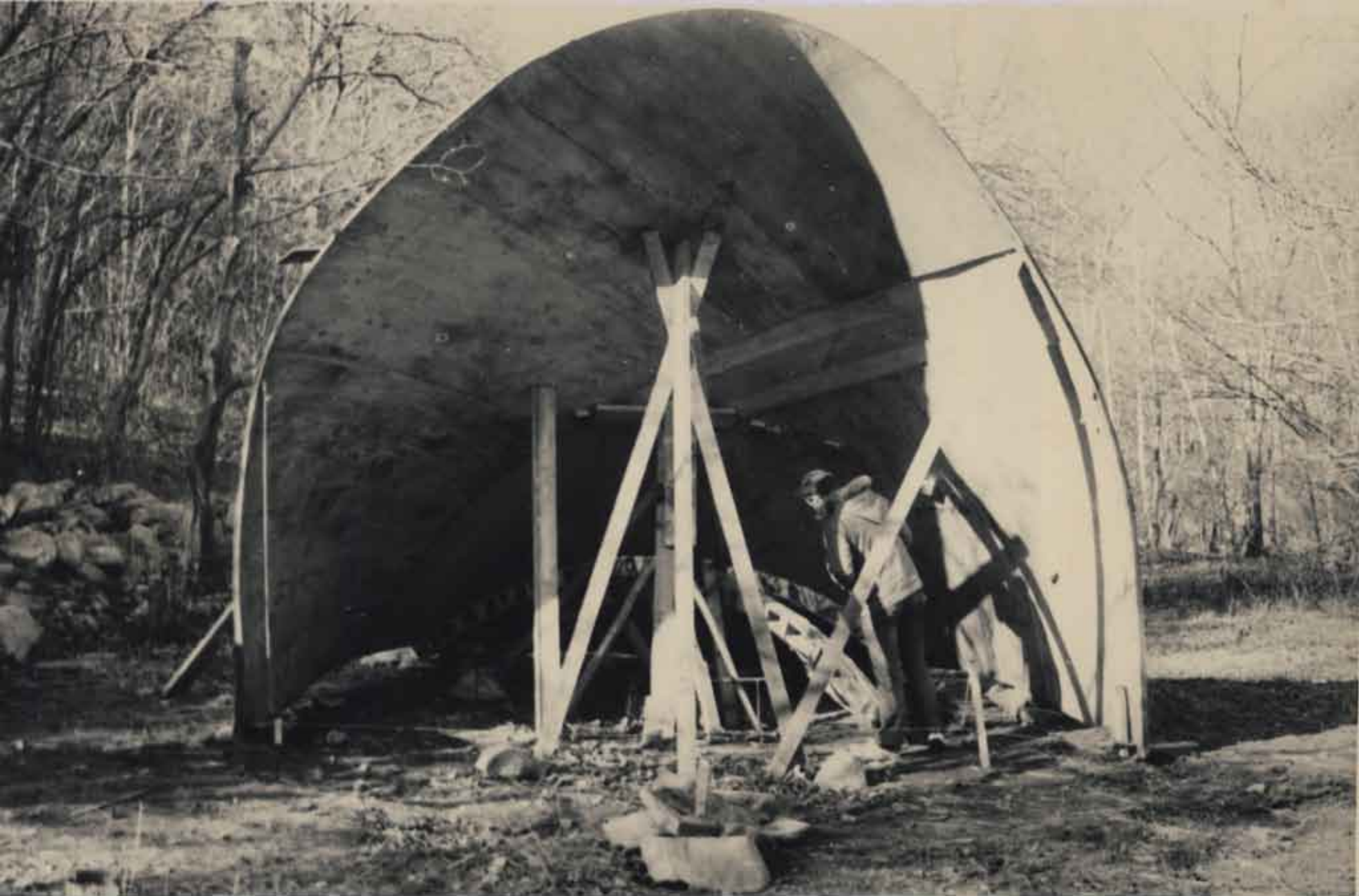


















The background is a complex, abstract composition of overlapping geometric shapes in shades of red, orange, yellow, and pink. The shapes include triangles, rectangles, and irregular polygons, creating a sense of depth and movement. The colors are layered, with some appearing more prominent than others. The overall effect is a vibrant, textured collage.

INSTINCT

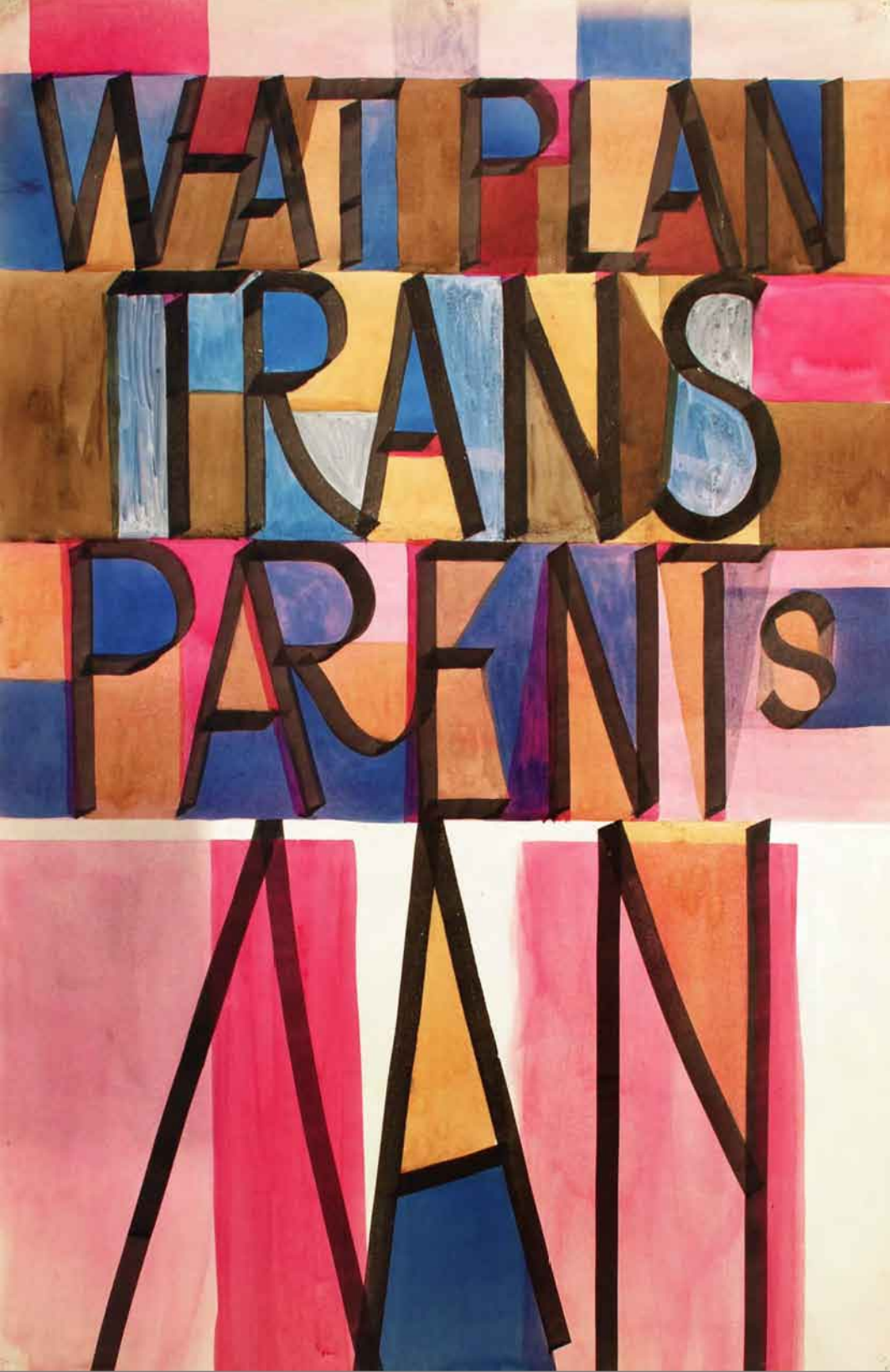
PREPARED

STRESS

WORKS

PEPERS

ITSELF



WHAT PLAN

TRANS

PARENTS

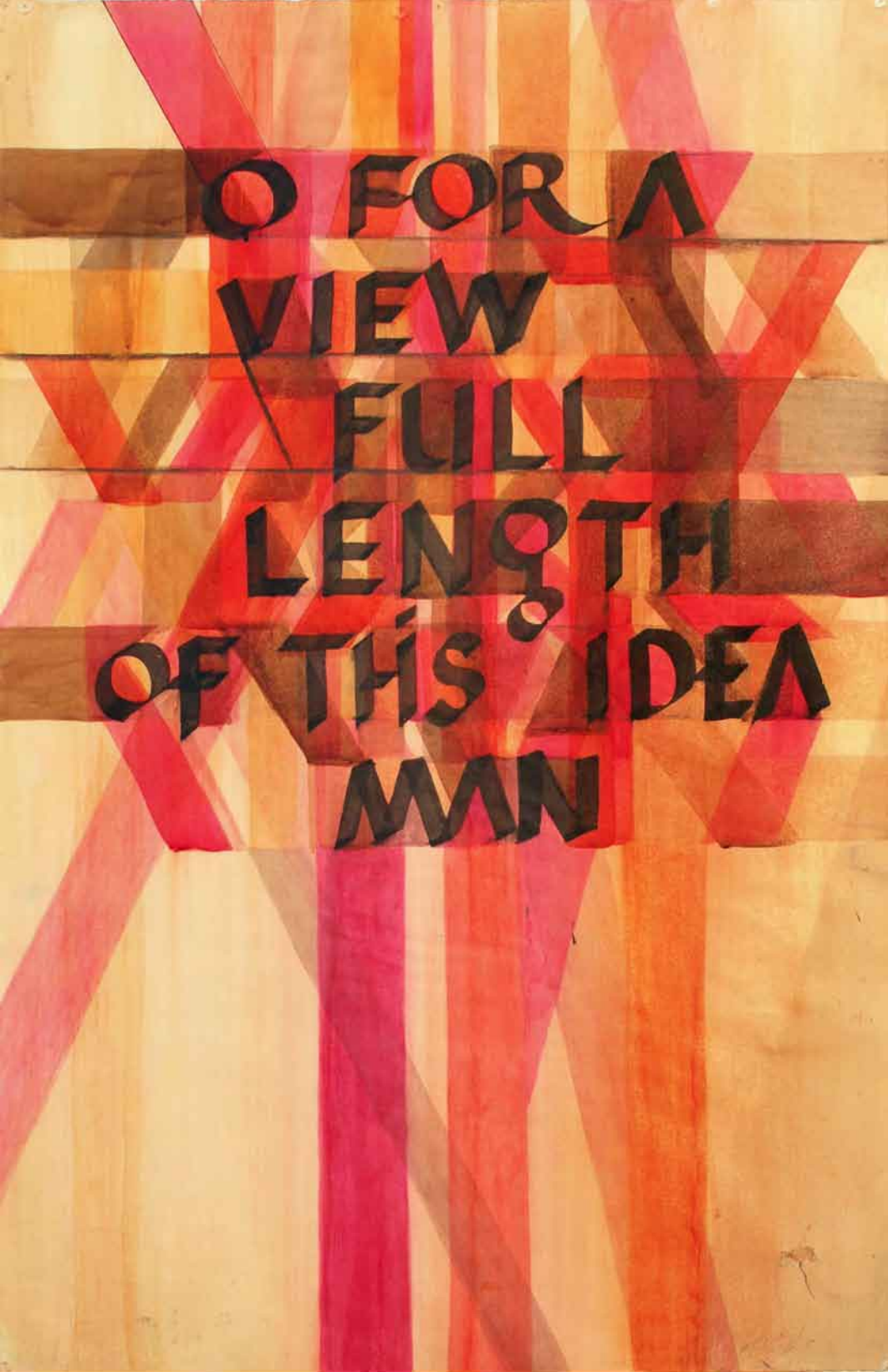
CAN

A WORLD OF

TWO

DOWNSON

LOW



Q FOR A
VIEW
FULL
LENGTH
OF THIS IDEA
MAN

